



Thinking in English

# English UK 2016

Courses for adults in  
London, Oxford & Brighton

European English Language School  
Winner 2010 & 2012



**British Study Centres**  
School of English

# Learning in English, living in English... thinking in English.




**Andrew Roper**  
Managing Director



It's amazing! Every week, hundreds of eager, curious new students come through our doors, looking for the key to their future. They recognise that to be taken seriously on the international stage, they have to be able to use the world's no.1 international language.

Understanding how to use English will be vital for their future careers, future lives, future happiness. Well, they've come to the right place. In all of our schools, our teachers and support staff have a wealth of international living and working experience. Many have taught English abroad and can themselves speak foreign languages. They can easily empathise with students and the difficulties they regularly face. But the caring doesn't stop when our students leave the classroom.

As well as our wide range of English classes, we also organise an array of social activities which provide our students with the perfect opportunity to meet one another, socialise, take part in fun activities, see fascinating places and of course, practise their English. 

## Contents

<b>London</b> .....	<b>4</b>
<b>Oxford</b> .....	<b>8</b>
<b>Brighton</b> .....	<b>12</b>
BSC Success Stories .....	<b>16</b>
Course options .....	<b>18</b>
General English .....	<b>20</b>
Exam preparation (IELTS, TOEIC, TOEFL, Cambridge FCE & CAE) .....	<b>22</b>
Business English   Specialist courses .....	<b>24</b>
<b>myBSC</b> – study platform & portal to the BSC world .....	<b>28</b>
<b>FAQs</b> .....	<b>30</b>



British Study Centres is committed to making a positive impact on our environment. This brochure has been printed using FSC certified paper from sustainable forests.



A member of the British Study Centres group of colleges



British Study Centres Schools of English are members of English UK and accredited by the British Council



**Brighton:**  
enjoying the seaside



**Historic Oxford**



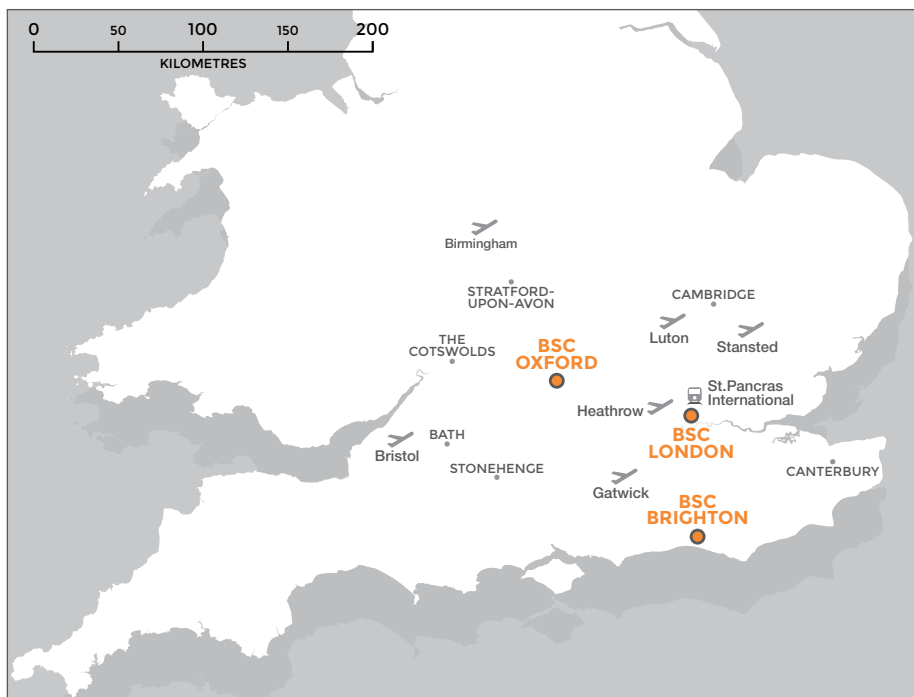
## Learning English in exciting UK locations

We offer high-quality courses and facilities in three of the most exciting UK locations. At any one time, there can be 35 nationalities in our schools, which ensures truly unforgettable experiences and highly cosmopolitan learning environments.

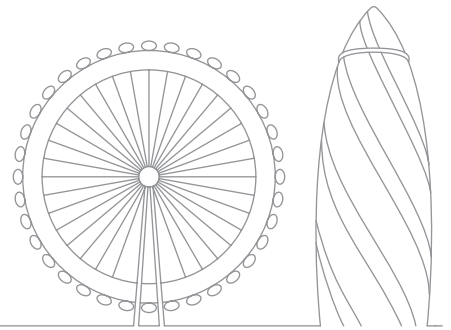
**Learning English in England:**  
an experience like no other



**London:** on the  
social programme



# London – the UK's iconic capital



Study in London. Live London. Love London.  
This incredible city will help shape your future.

## KEY FACTS

### Number of students

- Peak season: 450
- Low season: 300

### Age of students

- Average: 25

### Location

- The school is centrally located in London's world-famous West End, and within easy walking distance of Marylebone High Street and Oxford Street.

### Extra options

- Specialist Business English courses
- English Plus Football (see page 27)
- Job Club (see page 29)
- Unpaid internship (see page 29)

### Good to know

- Large in-house café with internet zone
- Free wireless connection

Exterior of our London school



## Outstanding location and facilities

Many of London's sights are within walking distance of our central London English language school, which is located in the heart of the city, close to Oxford Street and Baker Street. Bond Street and Baker Street underground stations are just 5 minutes' walk from the school.

The school is just 2 minutes' walk from Marylebone High Street, which was recently voted the best High Street in London for its sophisticated atmosphere and unique combination of designer shops, restaurants and cafés.

Facilities are shared with West London College (WLC), which provides career training to Bachelor's and Master's Degree level (Business Studies, Computer Training, Travel & Tourism and Fashion).



## Modern premises

Our school is housed on 5 floors and has 24 spacious, comfortable classrooms. At peak times we have the use of up to 33 classrooms at our main building, Hannah House, using classes from WLC. We also provide up to 9 teaching rooms at our additional centre, the School of Economic Science, located 5 minutes on foot from our main building.



## Library & study centre

The school is equipped with a university-style library and a self-access centre which has a wide range of self-study material and exam practice books together with 14 computers which all have self-study programs. An experienced teacher is always there to help you with any questions you have about the books or your studies.



## Free Internet zone

The computer area is fitted with 40 computers, many with headphones and webcams for an enhanced online experience, and offers free high-speed internet connection. Laptop users can also enjoy free Wi-Fi connection in the café and library.





School café

The school has a 70-seater in-house café with sofa area and wide-screen TV, where students can relax, have lunch and socialise with friends during breaks and after lessons.









Enjoying a sunny day  
 on the terrace

### Top 10 Nationalities 2015



### Fancy a walk?

The school's central location means tube stations and popular places are within easy walking distance of the school. Here are just a few of them.

-  Baker Street: 5 minutes
-  Bond Street: 5 minutes
-  Oxford Circus: 10 minutes
-  Oxford Street: 5 minutes
-  Covent Garden: 25 minutes
-  Piccadilly Circus: 20 minutes



The Houses of Parliament & Big Ben

**LONDON'S**

**5**

**TOP FREE THINGS TO DO**

London's full of great things to do. These five will cost you nothing at all – just the ticket.

**1**

**MUSEUMS**

London's 50+ free museums include the British, Natural History, Science, London Film, and Chocolate museums, Museum of London, and the V&A.

**2**

**GALLERIES**

Some of London's free galleries: The National, National Portrait, Saatchi, Tate Modern, Tate Britain, Whitechapel, Serpentine, and Photographers'.

**3**

**MUSIC**

Lots of pubs have free live music. There are also free classical concerts at St.Martin in the Fields, and summer big screen opera at Trafalgar Square.

**4**

**EVENTS**

There are always exciting free things to see and do in London, from film screenings, to talks, book readings, historic walks and stand-up comedy.

**5**

**PARKS**

London is famous for glorious parks, such as Regent's Park, St.James Park, Hyde Park, Green Park, Holland Park and Kensington Gardens.

THE COST OF THINGS IN LONDON	
Weekly Travelcard Zones 1–3 .....	£37.70
West End musical .....	from £25
Premier League match .....	from £35
Madame Tussaud's .....	from £19
London Eye .....	£19.35
Ministry of Sound .....	from £20
Return coach ticket to Oxford....	from £18
Return train ticket to Brighton....	from £27
Pint of beer in Soho .....	£4.50

### Discovering London

Some say London is the centre of the world! The city has so much history, heritage and culture and so much to see and do with world-famous landmarks such as Big Ben, Buckingham Palace and the London Eye. Enjoy London's nightlife, fine restaurants and the wide-open spaces of Europe's 'greenest' city. London also enjoys an eclectic mix of people and cultures making it a truly cosmopolitan city.

### Weekly social programme

The school runs an exciting weekly social programme. A typical month may include trips to the cinema, a boat party on the River Thames, a visit to the Houses of Parliament, the BBC studios or a picnic or sports afternoon in Regent's Park. In addition, there are weekend trips to places of interest, such as Bath and Stonehenge, Cambridge, Oxford and even Paris, Scotland or Amsterdam. A small charge (£3 – £15) is made for some activities, others are free of charge. Prices for full-day and weekend trips around the UK & Europe range from £30-£250.



The Southbank



The London Eye



Horseguard's Parade





## Accommodation – what you need to know

Some of our accommodation is booked via our experienced partner agencies, HFS London, UK Guests or All About Homestay. All accommodation is inspected by our Accommodation Officers on a regular basis and is within reasonable and safe walking distance from a tube station. Student house and residence accommodation options are only available for students over 18.

## Useful tips and advice

We always try to place students on a direct Underground line to the school. Baker Street station is 5 minutes walk from the school and is served by the Bakerloo, Jubilee, Hammersmith & City, Metropolitan and Circle lines.

Bond Street is a 5 minute walk from the school and is served by the Central and Jubilee lines. The most cost-efficient way to travel within

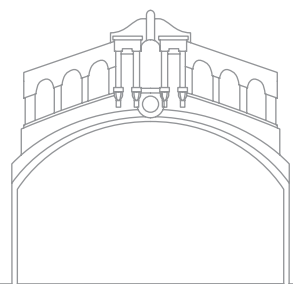
London is to buy a weekly or monthly Travelcard. Please see the Transport for London website, [www.tfl.gov.uk](http://www.tfl.gov.uk) for up-to-date prices. Students enrolled on a course of 14 weeks or more can save up to 30% by applying for an 18+ Student Oyster photocard.

For further information please enquire at the school's reception on arrival.

	HOMESTAY	STUDENT HOUSE	YEAR-ROUND RESIDENCE
<b>AVAILABILITY</b>	<ul style="list-style-type: none"> <li>All year round</li> </ul>	<ul style="list-style-type: none"> <li>All year round</li> </ul>	<ul style="list-style-type: none"> <li>All year round</li> </ul>
<b>LOCATION</b>	<p><b>S</b> The majority of our families are located in zones 3-4 and occasionally 5.</p> <p><b>E</b> Zones 2-3. Areas include: Willesden Green, Westbourne Park and West Hampstead.</p>	<p><b>S</b> The majority of our student houses are located in Zone 3. Areas include: Leyton, Leytonstone and Walthamstow.</p> <p><b>★</b> Our superior student house is located in North West London in the lively Borough of Camden and provides easy access to central London.</p>	<ul style="list-style-type: none"> <li>Located near Aldgate East, Aldgate &amp; Tower Hill Zone 1 underground stations, Student Castle provides easy access to central London and the school.</li> <li>Close to shops, markets, restaurants, bars and galleries in Shoreditch and Brick Lane.</li> </ul>
<b>HOME TO SCHOOL: average public transport journey</b>	<p><b>S</b> 45 minutes</p> <p><b>E</b> 45 minutes</p>	<p><b>S</b> 45 minutes</p> <p><b>★</b> 35 minutes</p>	<ul style="list-style-type: none"> <li>Aldgate East/Aldgate/Tower Hill: 30 minutes</li> </ul>
<b>BOOKING OPTIONS</b>	<p><b>S</b> &amp; <b>E</b> Single room</p> <p><b>S</b> Shared room (only available to 2 students booking together)</p>	<ul style="list-style-type: none"> <li>Single room</li> <li>Shared room (only available to 2 students booking together)</li> </ul>	<ul style="list-style-type: none"> <li>Single en-suite room</li> </ul>
<b>MEAL PLANS</b>	<ul style="list-style-type: none"> <li>Half board</li> <li>Breakfast only</li> </ul> <p><b>S</b> Self-catering</p>	<ul style="list-style-type: none"> <li>Self-catering: kitchens are modern and equipped with cookers, cutlery, cooking utensils, linen</li> </ul>	
<b>BATHROOM</b>	<p><b>S</b> Shared</p> <p><b>E</b> Private bathroom</p>	<p><b>S</b> Shared. Typically student houses have two bathrooms</p> <p><b>★</b> En-suite</p>	<ul style="list-style-type: none"> <li>All rooms are en-suite</li> </ul>
<b>INTERNET ACCESS &amp; OTHER FACILITIES</b>	<ul style="list-style-type: none"> <li>Internet access is available at most homestays. Please check with us at the time of booking.</li> </ul>	<ul style="list-style-type: none"> <li>Free internet access</li> </ul>	<ul style="list-style-type: none"> <li>Free internet access</li> <li>Access to common rooms and modern on-site gym</li> </ul>
<b>OTHER INFORMATION</b>	<ul style="list-style-type: none"> <li>Bed linen and towels provided</li> </ul>	<ul style="list-style-type: none"> <li>Only available to students over 18 years old</li> <li>Bed linen is provided (but please bring your own towels)</li> </ul>	

**S** Standard **E** Executive **★** Superior

# Oxford – the UK's no.1 student city



40,000 students and 39 historic university colleges make Oxford a magical place to study English

## KEY FACTS

### Number of students

- Peak season: 325
- Low season: 175

### Age of students

- Average: 25

### Centrally located

- The school is minutes away from main bus & railway stations

### Extra options

- Specialist Teacher Training Centre
- Job Club (see page 29)
- Unpaid internships (see page 29)

### Good to know

- Comfortable student lounge with wireless internet
- Modern well-resourced study centre
- Stylish exterior roof terrace

Radcliffe Camera



## A city made for students

Oxford has a deserved worldwide reputation for the quality of its education. Oxford University is consistently ranked in the top three in the world. The city has a renowned literary heritage. JRR Tolkien, CS Lewis, Philip Pullman and Lewis Carroll are just a few of the famous writers to have been based in Oxford.

The city sits on the banks of the Thames and boasts a variety of world-famous museums, galleries and libraries. Besides the traditional, there are hundreds of modern restaurants, pubs, clubs and riverside cafés to enjoy. Oxford also benefits from excellent road and rail links to London (50 minutes) and the rest of the UK.

**Interactive Classrooms** All of our 17 classrooms have projectors, making it possible to stream content from classroom iPads, laptops or even mobiles on to the whiteboards.



## Modern and central premises

We are located in the heart of the city, in the historic St.Giles district, just a few minutes from Christ Church College, where Harry Potter was filmed. Cornmarket, with its shops and cafés, is just 50 metres away.

The modern décor compliments our stylish facilities making this an ideal learning environment.



## Student lounge

The Den, our student lounge, is fully integrated with technology. In this space students now have the ability to access social media on the school iPads, to do their homework on laptops, to access content streamed on to our big screen TV, to play the video games consoles, or even table football!



## Free Wi-Fi

Free Wi-Fi throughout the school. iPads are available at the student lounge and study centre.





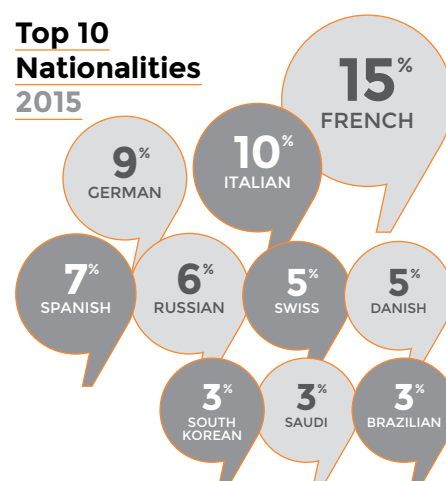
Study Centre

The Port study centre is equipped with iPads with online learning resources, as well as traditional learning materials – exam preparation, grammar and vocabulary books.



Students enjoy spending time on our roof terrace

### Top 10 Nationalities 2015



### Fancy a walk?

Oxford is a perfect walking city. Here are walking times from the school to transport links and some top places of interest.

- Christ Church College: 3 minutes
- Radcliffe Camera: 7 minutes
- Oxford railway station: 10 minutes
- Oxford bus station: 5 minutes
- Ashmolean Museum: 2 minutes
- The Bridge of Sighs: 10 minutes



### THE COST OF THINGS IN OXFORD

1-week bus pass .....	£15.50
Monthly bus pass .....	£53.50
Christ Church College .....	£5.50
Return bus ticket to London with Student ID .....	£14
Harry Potter walking tour .....	£5
Bicycle hire per week .....	£30
Open-top bus sightseeing tour .....	£15
Pint of beer .....	£4
University of Oxford Museums .....	Free

Oxford University is the world's oldest English speaking university, dating back to 1249. Famous alumni include Sir Tim Berners-Lee, inventor of the World Wide Web.

**DID  
YOU  
KNOW** ?

### Seeing the city, making friends

This is a hugely important aspect of every student's stay with us. Our aim at BSC is to provide as many opportunities to meet other students as possible and get to know the city.

Our weekly social programme is packed with cultural, sporting and leisure activities, including visits to a University college, film club, conversation club, theatre trip, greyhound racing, football, 'punting', museum visits and much more.

MONDAY	TUESDAY	WEDNESDAY	THURSDAY	FRIDAY	SATURDAY	SUNDAY
<b>1</b> Oxford Walking Tour <b>FREE</b>	<b>2</b> International Night: Spain <b>FREE</b>	<b>3 AUGUST</b> British Afternoon Tea <b>£3.50</b>	<b>4</b> Pub Tour Book Club <b>FREE</b>	<b>5</b> Bicester Village Designer Shopping	<b>6</b> York – Dracula & Harry Potter <b>£165</b>	<b>7</b>
<b>8</b> Oxford Walking Tour <b>FREE</b>	<b>9</b> Movie Night <b>£6</b>	<b>10</b> BSC Football <b>£3</b>	<b>11</b> Pub Tour Book Club <b>FREE</b>	<b>12</b> Museum of Natural History & Pitt Rivers <b>FREE</b>	<b>13</b> Amsterdam & Bruges <b>£145</b>	<b>14</b>
<b>15</b> Oxford Walking Tour <b>FREE</b>	<b>16</b> River Cherwell Punting <b>£4</b>	<b>17</b> International Night: India <b>FREE</b>	<b>18</b> Pub Tour Book Club <b>FREE</b>	<b>19</b> Christ Church College <b>£4.50</b>	<b>20</b> Paris & Versailles <b>£165</b>	<b>21</b>
<b>22</b> Oxford Walking Tour <b>FREE</b>	<b>23</b> Atomic Burger <b>£7.50</b>	<b>24</b> BSC Football <b>£3</b>	<b>25</b> Pub Tour Book Club <b>FREE</b>	<b>26</b> Laser Kombat <b>£5.95</b>	<b>27</b> Warwick Castle & Stratford-upon-Avon <b>£45</b>	<b>28</b> Isle of Wight & Portsmouth <b>£45</b>
<b>29</b> Bank Holiday School closed	<b>30</b> Oxford Walking Tour <b>FREE</b>	<b>31</b> Cheeky Nando's Night <b>£7.50</b>	<b>1 SEPTEMBER</b> Pub Tour Book Club <b>FREE</b>	<b>2</b> Ice Skating <b>£4</b>	<b>3</b> Warwick Castle & Stratford-upon-Avon <b>£45</b>	<b>4</b> Warner Bros Studio Harry Potter Tour <b>£79</b>

Sample Social Programme August 2015. A small charge (£3–£15) is made for some activities, others are free of charge. Prices for full-day and weekend trips around the UK & Europe range from £30–£250.





City centre residence



City centre residence



Year-round residence typical kitchen

## Accommodation – what you need to know

All the accommodation is inspected by our Accommodation Officers on a regular basis and is within reasonable and safe walking distance of a bus stop. The residence accommodation options are only available for students who are over 18 years old.

## Useful tips and advice

Oxford is the ideal cycling city, it's easy to hire bikes for a day or even for your entire stay. Get your bike from one of Oxford's many bicycle shops. Safety is essential, you will have to buy insurance and hire a helmet, lights and lock. Please ask at reception for more details.

We offer three different types of accommodation, according to your needs. All options offer safe, secure and friendly accommodation.

	HOMESTAY	CITY CENTRE RESIDENCE	YEAR-ROUND/SUMMER RESIDENCE
<b>AVAILABILITY</b>	<ul style="list-style-type: none"> <li>All year round</li> </ul>	<ul style="list-style-type: none"> <li>All year round</li> </ul>	<ul style="list-style-type: none"> <li><b>YR</b> Cavalier House</li> <li><b>SR</b> Slade Park (July &amp; August)</li> </ul>
<b>LOCATION</b>	<p><b>S &amp; E</b></p> <p>All hosts are within safe and reasonable walking distance from a bus stop</p>	<ul style="list-style-type: none"> <li>The residence is closely located to the city centre of Oxford and offers a great variety of shopping facilities in a retail park near the residence</li> </ul>	<p><b>YR</b> Cavalier House is located 15-20 minutes away from the school by public transport.</p> <p><b>SR</b> Slade Park, our summer residence, is situated approximately 3 kilometres from the school. The average journey time to/from school is 25 minutes by public transport.</p>
<b>HOME TO SCHOOL: average public transport journey</b>	<p><b>S</b> 30-40 minutes</p> <p><b>E</b> 25 minutes</p>	<ul style="list-style-type: none"> <li>Average journey time to school is 20 minutes on foot or 10 minutes by bus</li> </ul>	<p><b>YR</b> 20 minutes</p> <p><b>SR</b> 25 minutes</p>
<b>BOOKING OPTIONS</b>	<p><b>S &amp; E</b> Single room</p> <p><b>S</b> Shared room (only available to 2 students booking together)</p>	<ul style="list-style-type: none"> <li>Single en-suite room</li> </ul>	<ul style="list-style-type: none"> <li>Single en-suite room</li> </ul>
<b>MEAL PLANS</b>	<ul style="list-style-type: none"> <li>Half board</li> <li>Breakfast only</li> <li><b>S</b> Self-catering</li> </ul>	<ul style="list-style-type: none"> <li>Self-catering: kitchens are modern and equipped with cookers, cutlery, cooking utensils, linen</li> </ul>	
<b>BATHROOM</b>	<p><b>S</b> Shared</p> <p><b>E</b> Private bathroom</p>	<ul style="list-style-type: none"> <li>All rooms are en-suite</li> </ul>	<ul style="list-style-type: none"> <li>All rooms are en-suite</li> </ul>
<b>INTERNET ACCESS &amp; OTHER FACILITIES</b>	<ul style="list-style-type: none"> <li>Internet access is available at most homestays. Please check with us at the time of booking.</li> </ul>	<ul style="list-style-type: none"> <li>Free internet access</li> </ul>	<ul style="list-style-type: none"> <li>Free internet access</li> </ul>
<b>OTHER INFORMATION</b>	<ul style="list-style-type: none"> <li>Bed linen and towels provided</li> </ul>	<ul style="list-style-type: none"> <li>Only available to students over 18 years old</li> <li>Bed linen is provided (but please bring your own towels)</li> </ul>	

**S** Standard **E** Executive **YR** Year-round residence **SR** Summer residence

# Brighton – the UK's coolest city



Outdoor living, walking on the beach, sitting on a café terrace, exploring designer shops – heaven!

## KEY FACTS

### Number of students

- Peak season: 300
- Low season: 125

### Age of students

- Average: 25

### Specialist courses

- General English Plus Windsurfing (see page 30) or Wakeboarding (see page 31)

### Extra options

- Job Club (see page 29)
- Unpaid internship (see page 29)

### Good to know

- Student houses are within walking distance of the school
- Large in-house café and spacious garden
- Free wireless connection



## Young, fun and trendy

Known as 'London-by-the-sea', Brighton has two universities and reputedly the youngest population in the UK. It offers the buzz of a large cosmopolitan centre in a relaxing seaside setting. There is much to explore: the famous pier with its fairground attractions, the Marina with its waterside cafés, bars and health clubs and the Sea Life Centre. Brighton & Hove is on the south coast of England. There is a regular direct train service to London which takes just 49 minutes.

## Ideal location

Close to Brighton and Hove train stations and within easy reach of the city centre, we are close to all the major attractions of the city centre and even the beach, which is a 15 minute walk away.

We are next to our sister school, Hove College, which offers specialist diploma courses in Web and Graphic Design that can be combined with General English programmes.



## Bright classrooms

The school has 22 classrooms, spread over two buildings, all with high windows and natural light, most of them with views of our fantastic garden.



## In-house café

The school has its own café where students can have a meal and socialise during breaks and after lessons. The food is freshly made in-house and provides a good value-for-money lunch option.



## Learning facilities

- Well-equipped study centre with learning resources, computers & printers
- Free Wi-Fi throughout the school
- Interactive whiteboards in many classrooms



School garden & terrace

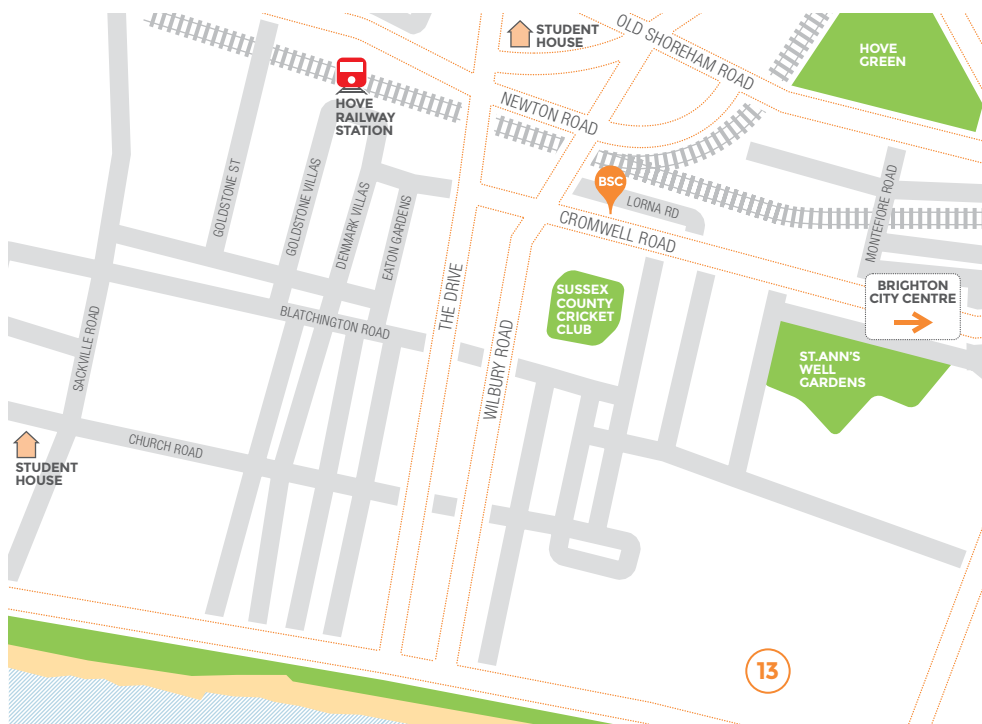
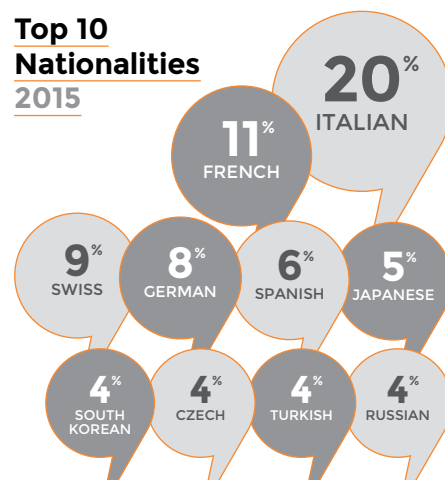


Our garden & terrace are the ideal places to have barbeques and socialise with classmates and friends after lessons.

Free Wi-Fi



### Top 10 Nationalities 2015



### Fancy a walk?

Here are some places within easy walking distance:

- The beach: 15 minutes
- The Lanes, Brighton: 20 minutes
- Brighton city centre: 20 minutes
- Brighton Pier: 30 minutes
- Brighton Pavilion: 25 minutes





Students at Brighton beach



Red Nose charity event

## BSC supports Save the Children

Throughout the year our schools participate in many fundraising events to support charities such as Cancer Research, Save the Children and Amnesty International. Last year BSC helped those charities raise over £2000! This year, staff and students at BSC Brighton have managed to raise more than £550 towards The Clock Tower Sanctuary for local homeless people.

In addition, British Study Centres has a chosen charity, the Hotcourses Foundation, which supports children in Africa that have a limited access to education. BSC is trying to help by making annual donations to the Foundation.

## Packed social programme

Our weekly social programme offers a fantastic range of events. Brighton is the perfect place to enjoy the best of British sun and seaside. Whether it's volleyball on the beach beside Brighton's famous pier, barbeques in the back garden of the school's premises, or even wandering around the magnificent Royal Pavilion, our students and staff have a great time.

A small charge (£3 – £15) is made for some activities, while others are free of charge. Prices for full-day and weekend trips around the UK & Europe range from £15 – £280.

### THE COST OF THINGS IN BRIGHTON

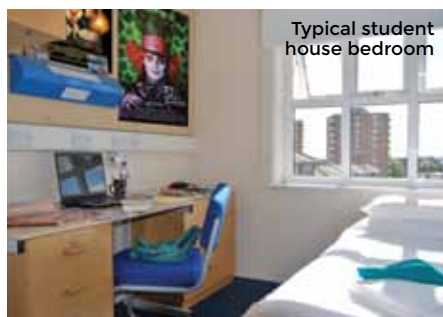
Weekly bus pass .....	£18.50
Entrance to Royal Pavilion .....	£10.00
Off-peak London Travelcard ticket ..	£18.80
Bicycle hire per day .....	£10.00
Bicycle hire per week .....	£15.00 – £25.00
Second hand bikes .....	£50.00 – £80.00
Fish & chips on the seafront .....	£7.50
Pint of beer in The Lanes .....	£4.80
The Brighton Wheel .....	£8.00
Brighton Museum .....	£6.50
The Sea Life Centre .....	£8.50



Students in the school garden

The social programme includes regular barbeques and international food parties





Typical student house bedroom



Typical student house bedroom



Typical student house kitchen

## Useful tips and advice

There is an excellent bus system in Brighton and Hove. We can provide you with a map of the bus routes. There is a lot of information about routes and timetables here:

[www.buses.co.uk](http://www.buses.co.uk)

One Stop Travel on North Street can provide you with information and sell bus and train tickets.

## Accommodation – what you need to know

All the accommodation is within reasonable

and safe walking distance of a bus stop directly connected to the school, and is regularly inspected by our Accommodation Officers.

The student house and summer residence accommodation options are only available for students who are over 18 years old.

We want you to feel at home in the UK – and we have a good range of accommodation options for you to choose from to suit your needs and budget.

	HOMESTAY	STUDENT HOUSE	SUMMER RESIDENCE
<b>AVAILABILITY</b>	<ul style="list-style-type: none"> <li>All year round</li> </ul>	<ul style="list-style-type: none"> <li>All year round</li> </ul>	<ul style="list-style-type: none"> <li>July &amp; August only</li> </ul>
<b>LOCATION</b>	<p><b>S</b> &amp; <b>E</b></p> <p>Most homestays are a bus ride away</p>	<ul style="list-style-type: none"> <li>All our student houses are conveniently located within walking distance – or a short bus ride – of the school. There is a large supermarket and plenty of convenience stores, restaurants and cafés in the nearby area.</li> </ul>	<ul style="list-style-type: none"> <li>Phoenix Halls: located in the centre of Brighton just half a mile north of the famous Brighton pier. The residence is easily accessible by bus and on foot.</li> </ul>
<b>HOME TO SCHOOL: average public transport journey</b>	<p><b>S</b> 40 minutes</p> <p><b>E</b> 40 minutes</p>	<ul style="list-style-type: none"> <li>15-25 minutes on foot, or a short bus ride</li> </ul>	<ul style="list-style-type: none"> <li>30 minutes</li> </ul>
<b>BOOKING OPTIONS</b>	<p><b>S</b> &amp; <b>E</b> Single room</p> <p><b>S</b> Shared room (only available to 2 students booking together)</p>	<ul style="list-style-type: none"> <li>Single room</li> </ul>	<ul style="list-style-type: none"> <li>Single en-suite room</li> </ul>
<b>MEAL PLANS</b>	<ul style="list-style-type: none"> <li>Full board</li> <li>Half board</li> <li>Breakfast only</li> <li><b>S</b> Self-catering</li> </ul>	<ul style="list-style-type: none"> <li>Self-catering: kitchens are modern and equipped with cookers, cutlery, cooking utensils, linen</li> </ul>	
<b>BATHROOM</b>	<p><b>S</b> Shared</p> <p><b>E</b> Private bathroom</p>	<p>Shared. Typically student houses have two bathrooms</p>	<ul style="list-style-type: none"> <li>All rooms are en-suite</li> </ul>
<b>INTERNET ACCESS &amp; OTHER FACILITIES</b>	<ul style="list-style-type: none"> <li>Internet access is available at most homestays. Please check with us at the time of booking.</li> </ul>	<ul style="list-style-type: none"> <li>Free internet access</li> </ul>	<ul style="list-style-type: none"> <li>Free internet access</li> <li>Access to common rooms</li> </ul>
<b>OTHER INFORMATION</b>	<ul style="list-style-type: none"> <li>Bed linen and towels provided</li> </ul>	<ul style="list-style-type: none"> <li>A £150 deposit is required to cover possible loss or damage to the contents and/or property. Only available to students over 18 years old.</li> <li>Bed linen is provided (but please bring your own towels)</li> </ul>	<ul style="list-style-type: none"> <li>Only available to students over 18 years old</li> <li>Bed linen is provided (but please bring your own towels)</li> </ul>

**S** Standard **E** Executive

BSC LONDON



### **In the fashion industry, English is essential**

I work internationally and have to communicate with people from around the world every day. My speaking has improved a lot, and now I feel really confident.

**Kotomi, Japan**

Fashion,  
Tokyo



# BSC success stories...



### **My English improved so much, I got a great job.**

I studied English at Brighton BSC. I loved the school and the atmosphere.

My background is media, 3D photography and design. After my course, I felt confident to look for my dream job - and I found it! I moved to London and my new adventure is amazing.

**Paula, Spain**

3D Creative Co-ordinator,  
Contracted Freelancer



BSC BRIGHTON



BSC OXFORD



### **Thanks to BSC Oxford, I'm now working at a top restaurant**

I am a chef in Italy, but wanted to learn about new cuisine abroad. My course at BSC Oxford gave me the confidence to succeed.

**Chiara Santero, Italy**

Chef,  
Oxford





# ...and the people who help them happen

Improving their English has boosted career prospects for lots of our students. At BSC, our qualified, experienced teachers can give you the tools to take the next step.



## Meet Paul Driver

He is a teacher/teacher trainer at BSC Oxford and has helped to introduce cutting edge technology throughout the school.

Technology is becoming more mobile, more invisible, more humanised, and is democratising the way we use classroom space.

## Paul, what's your role at British Study Centres?

I'm a language teacher, but also do teacher training – mainly tech courses, refresher courses and continuous professional development for in-house staff, as well as day-to-day IT classroom support for teachers.

## What do you enjoy most about your job?

The variety. I love my teaching time and trying out my ideas with students. This feeds into my teacher training. I also like trying out new things and keeping up-to-date with technology.

## How has the school changed in the last year?

In just a year, the school's infrastructure, environment and training have all been changed to embrace mobile technology in the classroom. Teachers have adapted and learned what they can do in the classroom.

Apple TV in every Oxford classroom



## Will people notice the impact of mobile technologies at school?

Definitely. We've got fixed, class and student iPads, and augmented reality posters around the school – great for posting social programme information as well as sharing student work.

## Have there been any changes to the classrooms?

We had interactive whiteboards, but what we really needed were projectors. Now every

Using ipads in class



classroom has got a projector connected to Apple TV, so teachers or students can stream anything from a mobile device – perfect for peer correction and presentations.

## What's the future of technology in English language schools?

At the cutting edge, we're definitely moving towards mobile technology, and there are no more clunky machines in classrooms. The humanisation of technology is the future trend.

## The BSC Community

Find out more about our students and teachers by visiting our blogs, social network pages and various online platforms to read travel stories, articles and reviews from our students on language courses abroad.



# General English, exam preparation & specialist courses

We offer a broad range of courses that have been carefully designed to cater for all needs and budgets.

## ALL COURSES INCLUDE

- Coursebook
- Access to **myBSC** account (see p32)
- First-day placement test
- Use of study centre
- Free internet access
- Progress report (for students studying 8 weeks or more)
- Help and advice with further study
- Homework corrected by your teacher
- End-of-course report
- BSC end-of-course certificate showing your final level and attendance record (min. 85%)



## Choice of courses – English at your fingertips

### General English

We offer an exciting range of General English courses for all levels, from Elementary to Advanced, and for all budgets.

Course intensity varies from 15 to 30 lessons per week to give you the opportunity to choose a course that perfectly suits your learning needs and daily routine. Each of our group lessons lasts 50 minutes.

### Exam preparation courses

Whether you are required to take an IELTS, TOEIC or TOEFL exam to enter a university or wish to study towards obtaining the FCE or CAE Cambridge certificate, we can provide the right exam preparation course for you.

### General English + Business English

This practical course is designed to widen your knowledge of specific vocabulary in a work context and business situations. It comprises 15 or 20 lessons of General English and 5 or 10 lessons per week of specialised Business English.

### General English + Cooking

Students who are passionate about cooking can now take advantage of this unique course and combine morning English classes with afternoon or evening cooking lessons at a local food and kitchen shop in London.

### General English + Watersports

Combine English with windsurfing or wakeboarding at our school in Brighton (available April–September).

### General English + Football

This course is offered year-round at BSC London and combines morning English lessons with football coaching in the afternoon.

### General English + Fashion

This course is available at BSC London, and combines General English lessons with fashion design.

### One-to-One

Private courses to suit your personal learning needs & daily routines. Individual lessons are all 60 minutes long and the content can be negotiated between student and teacher.

### Work experience & career services

Specialist programmes and advice for those wishing to further develop their career: internships, business courses and free job seeking guidance.

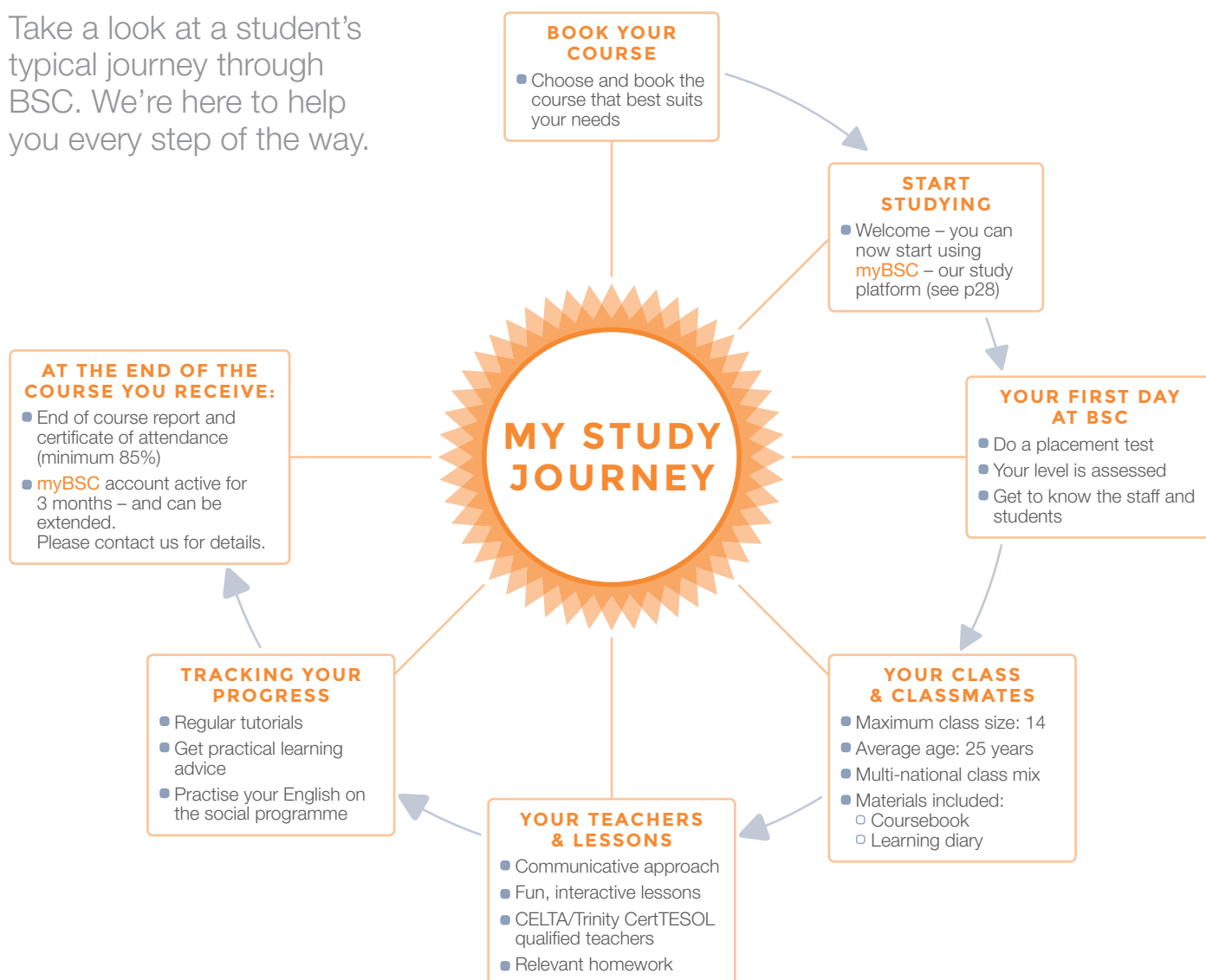
### Tailor-made courses for groups

We have a wealth of experience and expertise in designing and delivering courses specific to the needs of diverse groups.



# Let's go

Take a look at a student's typical journey through BSC. We're here to help you every step of the way.



Centrally located premises, first-class learning facilities, talented teachers and multi-cultural environments – just some of the advantages of choosing our award-winning schools.



# General English

We provide our students with a number of options in General English courses to suit all needs and budgets.

## KEY FACTS

### Start dates

- Every Monday

### Course levels

- Elementary to Advanced (A2 to C1)

### Average class size

- 11 (max 14)

### Minimum course length

- 2 weeks

### Minimum age

- 16 years

### Group lesson duration

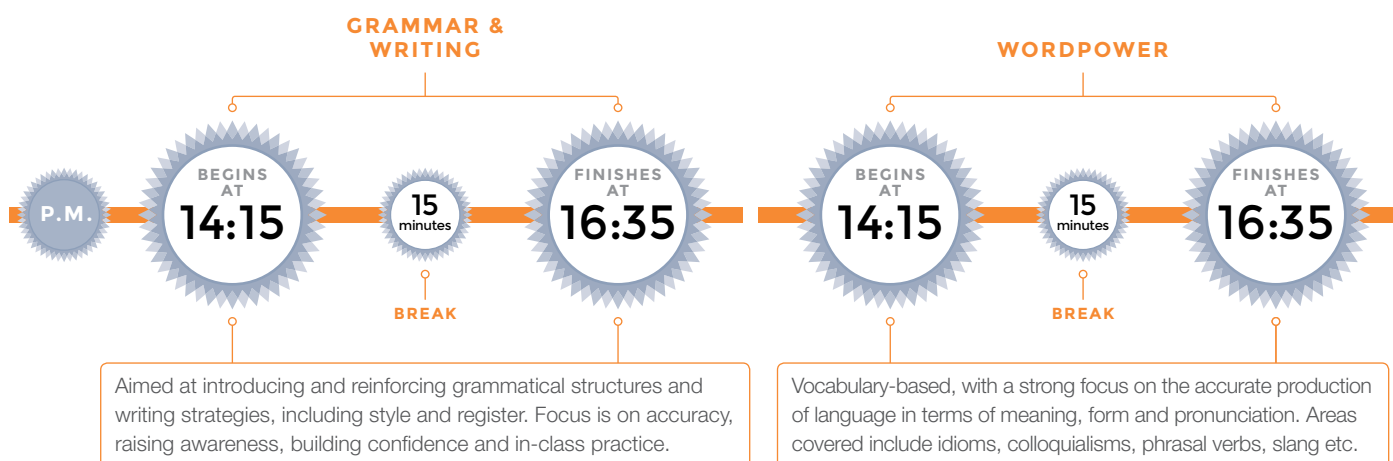
- 50 minutes



**General English** forms the core of our teaching programme. **Morning classes** are based around a coursebook lesson, followed by a Speaking & Listening class.



**Afternoon and intensive courses** offer you the chance to focus on specific language areas and may include the following options depending on your learning needs and preferences.



Lesson times may vary across schools



# Choose your course

Whether you want to improve your English for work, study or pleasure, a General English course is the key to understanding the language.

	09:15	12:00	12:20	13:1	14:15	16:35	17:10	18:00
<b>MORNING G15AM</b> 15 lessons/week, 12.5 hrs	15 lessons Mon – Fri <b>CB</b>							
<b>MORNING G20AM</b> 20 lessons/week, 16.6 hrs	15 lessons Mon – Fri <b>CB</b>	Break	5 lessons Mon – Fri <b>SL</b>	Lunch				
<b>INTENSIVE G25</b> 25 lessons/week, 20.8 hrs	15 lessons Mon – Fri <b>CB</b>		5 lessons Mon – Fri <b>SL</b>		5 lessons/week Mon & Tue/Wed & Thu <b>WP</b> or <b>GW</b>			
<b>INTENSIVE G30</b> 30 lessons/week, 25 hrs	15 lessons Mon – Fri <b>CB</b>		5 lessons Mon – Fri <b>SL</b>		10 lessons/week Mon – Thu choice of two <b>WP</b> <b>GW</b>			
<b>AFTERNOON G15PM</b> 15 lessons/week, 12.5 hrs			5 lessons Mon – Fri <b>SL</b>		10 lessons/week Mon – Thu <b>WP</b> & <b>GW</b>			
<b>AFTERNOON G20PM</b> 20 lessons/week 16.6 hrs				15 lessons Mon – Thu (13.15 – 17.00) <b>CB</b>			5 lessons Mon – Thu (17.10 – 18.00) <b>SL</b>	

Sample timetable

**CB** Coursebook **SL** Speaking & Listening **WP** Wordpower **GW** Grammar & Writing

## English for life

General English courses form the foundation of your English knowledge, and give you the space to analyse, question and practice. They include speaking, listening, reading, writing and pronunciation. The aim is to help you use newly acquired skills in real-life situations, immediately.

## Small groups

Classes are small and multinational, with an average of 11 students and a maximum of 14. This enables our teachers to focus on your individual aims and interests, and help you improve your English in a way which is relevant to you.

A warm and friendly environment is essential for effective learning. Our commitment to this and high standards of achievement, ensures that your time at the school is a rewarding experience.

## Individual assessment

You will be individually assessed both on arrival and throughout the course. We give you a written and oral test on your first day and monitor your progress regularly. If you have achieved satisfactory attendance (85%+), you receive a certificate and a report signed by Academic Management at the end of your stay.

These are very useful tools to show employers when looking for a new job.

## Highly interactive lessons

We use a communicative approach to teaching. Lessons are fun and interactive with a high level of student involvement focussing on the ability to communicate successfully in English. As well as using stimulating and contemporary materials, we employ a variety of different methodologies and technologies.

- Coursebook included
- Lots of tasks in pairs & small groups
- Interactive whiteboards in many classrooms

## Real-world tasks

We make the most of being in an English environment using class trips and external resources as much as possible to provide a personalised, authentic language learning experience. We also use a range of contemporary authentic, and stimulating materials, including news articles, videos and radio interviews.

## Track your progress

It's important to remain motivated while you study. Weekly progress tests and regular 1-to-1 tutorials with a General English teacher, allow students to discuss progress and get advice.

In class, feedback is an essential part of the learning and reflection progress. The flexible approach of our teachers means that correction

can cover grammar, pronunciation, or any other relevant aspect of English which helps our students improve.

## myBSC – online study platform

Outside the class, students can use **myBSC**, our online virtual learning environment. Here they can supplement classroom learning with extra tasks and practice. This is available to all students from the moment they book, until 3 months after they have left the school.

## High-quality teaching

We keep our teaching team up-to-date with the latest ideas in EFL methodology in a number of ways. We have regular staff meetings and training sessions to introduce new ideas and techniques as well as discussing the particular needs of any students who might be having problems. We believe that these regular meetings are essential in order for us to provide a high level of professionalism and care for students.

## Nationality mix

We are really proud to have students from over 95 countries at our schools! This is a great opportunity to get to know people from different cultures and make your stay at British Study Centres a truly unforgettable experience!



# Exam preparation

Whether you need IELTS, TOEIC or TOEFL for university study, or FCE or CAE Cambridge qualifications – we can help.



## COURSE SUMMARY

Course code	IE20, IE25, IE30
Available in	All centres
Start dates	Any Monday
Minimum level	Intermediate (B1)
Class size	Average 11, maximum 14
Lessons/week	20, 25, 30
Lesson duration	50 minutes
Exam fee	Approx. £170 (not included)

## IELTS preparation

IELTS (International English Language Testing System) is an increasingly popular exam taken by students who plan to study at university in the UK, either for a first degree or a Master's. We offer a bespoke course which helps you prepare for the exam.

### Course description

15 lessons of specialist IELTS preparation plus 5, 10 or 15 lessons per week of the following afternoon options: Speaking & Listening, Grammar & Writing, Wordpower and/or Business English.

### Contents & timetable

**09:15 – 12:00, Mon – Fri:** During the first three lessons of the day the work done in class is based around a specialist IELTS coursebook and supplementary material is also used, particularly from authentic sources such as newspapers. The syllabus includes a range of topics which are relevant to the test. On this course you will study the four skills - reading, writing, speaking and listening – as they relate to the academic IELTS test, as well as specific task types necessary to do well in the test.

**Afternoon lessons:** Options can be added to the IELTS course, too: many students take extra Speaking & Listening, Grammar & Writing, Wordpower and/or Business English lessons.

## COURSE SUMMARY

Course code	FCE, CAE
Minimum level	FCE: Upper-Intermediate (B2) CAE: Pre-Advanced (C1)
Available in	All centres
Class size	Average 11, maximum 14
Lessons/week	20, 25
Lesson duration	50 minutes
Exam fee	Approx. £160 (not included)

Preparation courses for  
University of Cambridge ESOL Examinations

## Cambridge exam preparation courses

Cambridge preparation courses give you the opportunity to study for an internationally-recognised qualification. Preparation courses are offered at First Certificate and Advanced level. For information on the exact start dates and duration, please see our fee sheet. The exam covers writing, reading, grammar, listening and speaking. The course prepares you for all these different parts of the exam. In addition you will do a lot of work on areas of general English, so you certainly will not spend all your time doing practice exams.

### Contents & timetable

**09:15 – 12:00, Mon – Fri:** Specialist coursebook class focusing on exam practice techniques.

**12:20 – 13:10, Mon – Fri:** Speaking & Listening – an extra opportunity for fluency practice.

This course includes 20 or 25 lessons/week depending on the school. The intensive programme includes an extra 5 lessons which are taken on 2 afternoons per week from 14:15 to 16:35.

## Please note...

Some parts of the exam may be taken before the end of the course.



## COURSE SUMMARY

Course code	TOEFL22/TOEIC22
Start dates	Any Monday, Sep-Jun, London & Oxford Any Monday, year-round, Brighton
Minimum level	Intermediate (B1)
Class size	Average 11, maximum 14
Lessons/week	20 group + 2 one-to-one
Lesson duration	Group: 50 minutes One-to-one: 60 minutes
Exam fee (not included)	TOEFL approx. £135 TOEIC approx. £100

## General English Plus One-to-One TOEFL or TOEIC Preparation

Our TOEIC & TOEFL courses have weekly start dates and are designed to focus on perfecting examination skills.

### Course description

Our General English plus TOEIC or TOEFL courses also have weekly start dates and include a combination of 20 General English lessons and 2 private lessons per week in which you can focus on perfecting examination skills.

### Contents & timetable

**09:15 – 12:00, Mon – Fri:** In the morning this course follows the same pattern as the Morning General English course and we work with a coursebook concentrating on the four main skills – speaking, listening, reading and writing.

**Afternoon lessons:** The 5 afternoon group lessons are one of the three following options: Speaking & Listening, Grammar & Writing or Business English.

**One-to-one lessons:** The 2 one-to-one lessons usually take place in the afternoon. Individual lessons all last 60 minutes.

## COURSE SUMMARY

Course code	TOEFL25/TOEIC25
Available in	London & Oxford
Start dates	Any Monday, Jul & Aug
Minimum level	Intermediate (B1)
Class size	Group: Average 11, max.14 Mini-group: max 6
Lessons/week	20 group + 5 mini-group
Lesson duration	Group: 50 minutes
Exam fee (not included)	TOEFL approx. £135 TOEIC approx. £100

## General English Plus TOEFL or TOEIC Summer Preparation in Mini-groups

### Course description

In summer the course comprises 20 lessons of General English plus 5 lessons of TOEIC or TOEFL Preparation in mini-groups (max. 6 students).

### Contents & timetable

**09:15 – 12:00, Mon – Fri:** In the morning this course follows the same pattern as the General English plus One-to-One TOEFL or TOEIC Preparation (see above).

**Afternoon lessons:** The 5 afternoon group lessons comprise one of the three following options: Speaking & Listening, Grammar & Writing or Business English.

**Mini-group lessons:** The 5 mini-group lessons take place on two afternoons and are designed to focus on exam practice techniques.

## The Common European Framework of Reference

This internationally recognised framework describes language ability on a scale of levels which ranges from A1 for beginners to C2 for those who have mastered a language. The table below demonstrates the correlation between CEFR, levels taught at British Study Centres and benchmark scores obtained in Cambridge, IELTS, TOEFL and TOEIC exams.

Please note: All level comparisons between exams are approximate. Students wishing to study on an exam course need to take a pre-test – please contact individual schools for details.

CEFR	BSC LEVELS	CAMBRIDGE	IELTS	TOEFL • paper • computer • IBT	TOEIC
<b>MASTERY C2</b>		Certificate of Proficiency in English (CPE)	9.0 8.0	677/300/120 600/250/100	900 800
<b>EFFECTIVE OPERATIONAL PROFICIENCY C1</b>	Advanced	Certificate in Advanced English (CAE)	7.0	550/213/80	700
<b>VANTAGE B2</b>	Upper-Intermediate	First Certificate in English (FCE)	6.0 5.0	500/173/61 450/133/45	600 450
<b>THRESHOLD B1</b>	Intermediate	Preliminary English Test (PET)	4.0		
<b>WAYSTAGE A2/B1</b>	Pre-Intermediate	Key English Test (KET)			
<b>BREAKTHROUGH A2</b>	Elementary	Elementary			

Courses for A1 Beginners are not available at BSC



## Pre-Arrival Online Courses

Maximise your chances of better exam results by taking specialist pre-arrival online lessons. Lessons include discussions and interactive exercises and use rich media such as images, audio and video. Courses work on a cyclical

syllabus, but can be tailored to students' individual levels and needs.

Add online lessons from just £100/5 sessions. For more details, see the Live Online Lessons section of our website.

# Business English

Designed for students who need to improve their general English, but wish to focus on Business English in the afternoons.

## COURSE SUMMARY

Course code	B20*, B25, B30
Available in	London, Oxford & Brighton
Start dates	Any Monday
Minimum level	Intermediate (B1)
Class size	Average 11, maximum 14
Lessons/week	20*, 25, 30
Lesson duration	50 minutes
Exam fee	£45 (not included)

\*Excluding London



## General English Plus Business English

This practical course is designed to widen your knowledge of specific vocabulary in a work context and business situations. Our schools are official agents and test centres for students who wish to take the BULATS (Business Language Testing Service) exam. The BULATS exam is an online test involving reading, use of English and listening, and is a very useful certificate for students who wish to extend their visa and need to show proof of having taken an exam.

### Course contents

This course comprises of 15, 20, or 25 lessons of General English and 10 (London) or 5 (Oxford & Brighton) lessons per week of specialised Business English in the afternoon.

### Contents & timetable

**09:15 – 12:00, Mon – Fri:** In the morning this course follows the same pattern as the Morning General English course and we work with a coursebook concentrating on the four main skills – speaking, listening, reading and writing.

**12:20 – 13:10, Mon – Fri:** Students who wish to join a more intensive programme can attend the Speaking & Listening lessons for an extra opportunity for fluency practice.

**14:15 – 16:35, Mon – Thu, four (London) or two (Oxford & Brighton) afternoons/week:** Specialised Business English where we cover all the skills, but focus more on speaking and listening. Emphasis is placed on communication tasks which give you the opportunity to practise fluency and build confidence in business situations.

Advice and assistance is available for students wishing to take the BULATS examination. Please see the Academic Director for more details.

# Work experience & career services

We offer specialist programmes and advice for those wishing to further develop their career: internships and free job seeking guidance.

## Internships

For students wishing to gain work experience in a UK-based company and to improve their CV, we are able to offer unpaid internships in all centres. Placements can be arranged in the following sectors: marketing, hospitality, hotel & catering, media, events and administration.

Students must take a minimum 6-week course prior to placement. Minimum entry level is Intermediate.

## Teacher Training

Our specialist Teacher Training centres in Oxford and Brighton offer a range of courses suitable for both UK and overseas teachers, whether just setting out on their teaching careers or wishing to extend their skills with on-going professional development.

We offer the 4-week CELTA, the 9-month DELTA and 2-week 'refresher' courses for non-native teachers. Please see our separate Teacher Training brochure for more information.

## Job Club

For students wishing to find part-time work during their studies, we hold a Job Club every other week in all our schools. We provide details of available jobs in local cafés, bars, shops and hotels.

All students receive a job pack with information on UK law, visas and the minimum wage. We also have a 'CV Clinic' where we give students free help and advice.



## My internship transformed my English ability

It was always my dream to live and work abroad. My experience at BSC helped me to improve so much. I now feel really comfortable and confident in English – it's fantastic!

**Maria Höch, German**

Interior Designer,  
London





# English plus Activities

Designed for students wishing to enrol on a more specialist programme or to include activities in the afternoon.



## COURSE SUMMARY

Course code	G30FS
Available in	London
Start dates	4 Jul 2016, 1 Aug 2016
Course length	4 or 8 weeks
Minimum level	Intermediate (B1)
Class size	Average 11, maximum 14
Lessons/week	English: 20 Fashion: 10
Lesson duration	50 minutes

## General English plus Fashion

This course combines General English in the morning with Fashion in the afternoon. It enables experienced students or those with little or no design background to develop key creative skills and understand the principles of the design process in 2D and 3D. Students develop in an independent and individual way through a variety of workshops.

### Contents & timetable

**09:15 – 13:10, Mon – Fri:** In the morning this course follows the same pattern as the General English G20. It includes 15 coursebook lessons followed by 5 speaking & listening lessons per week.

**14:00 – 16:30, Mon – Fri, Fashion:** The syllabus includes basic drawing, photography, observational skills, research skills and media techniques and building an exciting sketchbook and portfolio. You will experiment with and develop different textile techniques, printmaking, presentation skills and study the principles of 3D and construction on mannequins. In addition, inspirational visits to the V&A, Tate Modern, Somerset House and the Wallace Collection take place during the course.



Fashion is taught by the same team of tutors delivering the University of Arts London Foundation Diploma in Art and Design. This course is an

ideal introduction for any student wanting to progress to a career in fashion, and is held at our premises in central London.



## General English Plus Cooking

Students who are passionate about cooking can now take advantage of this unique course and combine morning English classes with afternoon or evening cooking lessons at a local food and kitchen shop in London.

This course aims to help the novice cook become more confident at preparing a meal and also to inspire the competent cook when creating a dish. The emphasis is to empower cooks of every level and provide an extra opportunity to practise English.

### Course contents & timetable

**09:15 – 12:00, Mon – Fri:** We work with a coursebook during the first three lessons of the day enabling you to improve the four main skills – speaking, listening, reading and writing. As well as these four main skills we will also work on other key areas to help develop your fluency and accuracy - pronunciation, grammar, vocabulary, idioms.

**12:20 – 13:10, Mon – Fri:** The final lesson of the course is devoted to Speaking & Listening, which is an extra opportunity for fluency practice.

**3 afternoon or evening cooking sessions per week (2 hours each):** Cookery lessons will take place at a local food and kitchen shop where anyone can learn to cook and make great food. Some lessons require that two participants share the same workstation. This provides an extra opportunity for you to practice your English without compromising your cooking time or outcome of the lesson.

Cookery class themes include: Chop, Dice & Slice, Bouillabaisse, Thai Curry, Perfect Steak, Pasta Master, American-Style Chilli and many others.

The course price includes in each lesson: teaching, demonstration, cooking and eating, use of an apron, tools and a glass of wine (under 18s non-alcoholic drink).

**DID YOU KNOW?**

Baking & chocolate-making sessions are included in some schools' social programmes. We even have regular international food sharing parties.

### COURSE SUMMARY

Course code	G26C
Available in	London
Start dates	Any Monday
Duration	2 weeks
Minimum level	Intermediate (B1)
Class size	English: avg. 11, max. 14 Cooking: max. 16
Lessons/week	26
Lesson duration	English: 50 mins Cooking: 60 mins

### COURSE SUMMARY

Course code	G30W
Available in	Brighton
Start dates	Any Monday Apr-Sep
Duration	2 weeks
Minimum level	Intermediate (B1)
Class size	English: avg. 11, max 14 Windsurfing: max 3
Lessons/week	30
Lesson duration	English: 50 mins Windsurfing: 60 mins

## General English Plus Windsurfing

Combine morning English lessons with windsurfing in the afternoon.

### Contents & timetable

**09:15 – 13:10, Mon – Fri:** In the morning this course follows the same pattern as the General English G20. It includes 15 coursebook lessons followed by 5 speaking & listening lessons per week.

**15:00 – 17:00, Mon – Fri:** Students who are new to windsurfing will learn about the equipment that you use and wear, practise how to windsurf on a simulator before suiting up and getting on the water, learn about the wind and how to steer and turn around, join in fun races and freestyle demos to improve sailing and much more. Students who reach Intermediate level will have the opportunity to use more advanced boards and sails, learn to use the harness and master new freestyle tricks.







### COURSE SUMMARY

Course code	G26F
Available in	London
Start dates	Any Monday
Duration	2-12 weeks
Minimum level	Pre-Intermediate (B1)
Class size	English: avg. 11, max. 14 Football: max. 15
Lessons/week	26
Lesson duration	English: 50 mins Football: 60 mins

### General English Plus Football

General English plus football coaching three afternoons/week at West Ham United's training ground – 'The Academy'. Each weekend all students on the course will play a competitive game. Sessions are conducted by UEFA qualified coaches. All students receive a Nike shirt, shorts and tracksuit. Football boots, shin pads and socks are not provided. All students receive a certificate at the end of their course.

Courses can start any week of the year (except Christmas and New Year weeks) and can be combined with any morning General English programme.

### Contents & timetable

**09:15 – 13:10, Mon – Fri:** In the morning this course follows the same pattern as the General English G20. It includes 15 coursebook lessons followed by 5 speaking & listening lessons/week.

**14:30 – 16:30, Tue – Thu:** Football training.

### COURSE SUMMARY

Course code	G25WB
Available in	Brighton
Start dates	Any Monday Apr-Sep
Duration	2 weeks
Minimum level	Intermediate (B1)
Class size	English: avg. 11, max 14 Wakeboarding: max 4
Lessons/week	25
Lesson duration	English: 50 mins Wakeboarding: 60 mins

### General English Plus Wakeboarding

Students who are passionate about watersports can now take advantage of Brighton's seaside location and combine morning English lessons with wakeboarding in the afternoon.

### Contents & timetable

**09:15 – 13:10, Mon – Fri:** In the morning this course follows the same pattern as the General English G20. It includes 15 coursebook lessons followed by 5 speaking & listening lessons per week.

**15:00 – 16:00, Mon – Fri:** Brighton is home to the first Wakeboard Cable on the South Coast. Cable Wakeboarding is a high-speed action sport and one of the fastest growing water sports in the world. The rider is towed by a cable at around 20mph performing jumps and tricks. It provides instant fun for all. It's exhilarating, exciting and extremely addictive.



# myBSC – study platform & portal to the BSC world

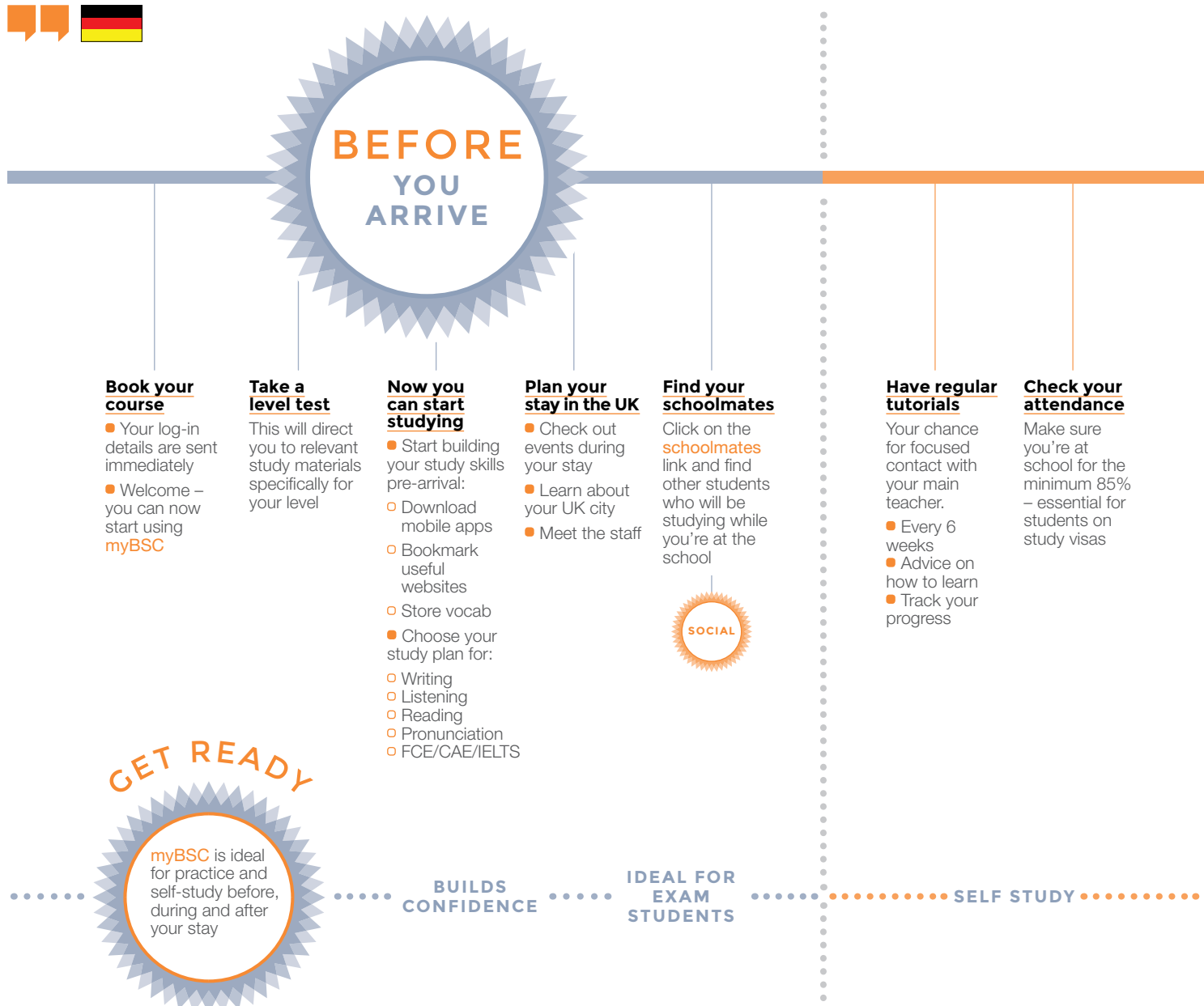
Shape & improve your learning experience from the moment you book with us until long after you leave.



**Nicolas, Germany**

myBSC is wonderful. I will use it regularly the next 3 months to continue learning and improving my English.

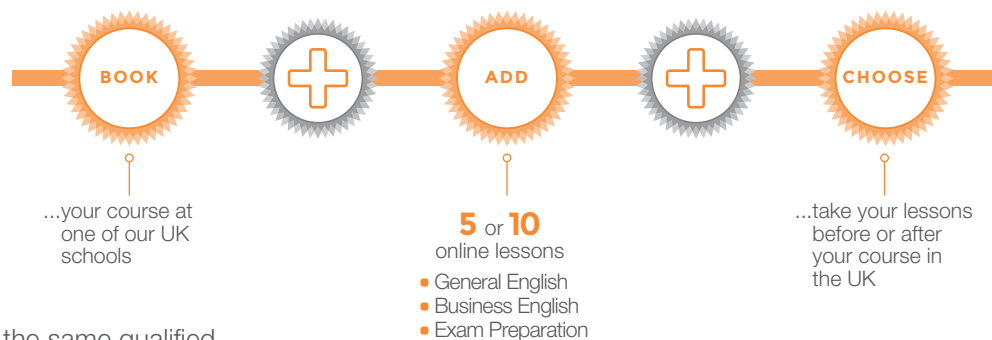
It is easy to use, clearly designed and offers a lot of opportunities to learn English. Well done!





## DID YOU KNOW?

You can take extra **live online lessons** with a UK-based teacher before or after your course. Simple. Smart. Effective.



- Lessons are delivered by the same qualified teachers as in our UK-based schools using the latest online video conferencing technology
- Pre-arrival lessons can help you gain confidence before you travel to the UK
- Post-departure live lessons are a great way to keep your English active

## FIND OUT MORE

To see a preview of example lessons and practice exercises, visit:  
[www.british-study.com/online-courses](http://www.british-study.com/online-courses)

The British Council is currently not able to offer accreditation for any online courses

## DURING YOUR STAY

### **Social programme**

Easy to check at a glance which social events are coming up during the next month – don't miss a thing

**SOCIAL**

### **Study plan**

Ideal for students who want extra study

- Perfect for homework exercises
- Extra class study materials

### **Final report**

All students leave BSC with a certificate and a report.

Your report is linked to your **myBSC** account.

## AFTER YOU LEAVE

### **You're still online**

Your **myBSC** account is active for 3 months after you leave

### **Review your progress**

Use your tutorials and reports to plan your future studies

### **Real English**

Improve your grammar and vocabulary with weekly topical news lessons

### **Extended access**

Want to extend access to your **myBSC** account even further? No problem. Contact us for details.

**HOMEWORK**

**KEEPS YOUR ENGLISH ACTIVE**

# FAQs

Need to ask us something? No problem.  
Here are most of the answers.

## **When can I start the course?**

The majority of our courses start every Monday throughout the year.

## **How long can I study for?**

The minimum is 2 weeks but you can study for as long as you want – up to 1 year if you wish!

## **What is the minimum age?**

16 years old.

## **Is the school accredited by the British Council?**

Yes, British Study Centres (BSC) is accredited by the British Council for the teaching of English as a foreign language. It is also an active member of English UK, the national association of accredited English language centres. In addition, BSC London is also accredited by the Independent Schools Inspectorate.

## **How do I book my course?**

You can easily book and pay for your course online. Alternatively, you can contact us on [info@british-study.com](mailto:info@british-study.com) for a list of authorised British Study Centres representatives in your country. We strongly advise you to do this as you will receive knowledgeable course advice in your own language and also information on applying for a visa (visa national students). Some agents will also book your flight tickets for you.

## **Do I need to pay a deposit?**

Yes. We ask for a deposit of £250 to secure the course and accommodation if you require it.

## **Do I need a visa to study at your school?**

Students from European Economic Area (EEA) and Switzerland do not need a visa to study in UK. The situation for students from other countries varies. Please check with a British Consulate or Embassy in your country of residence.

## **Can British Study Centres issue Confirmation of Acceptance for Studies (CAS) numbers?**

British Study Centres London is recognised as Tier 4 Sponsor by the UK Border Agency. This is relevant for students applying for a Tier4 (General) Visa.

## **How many students are there in each class?**

We have a maximum of 14 students per class and an average of 11.



## **Where do the other students come from?**

From all over the world! We have students from Europe, South America, Asia and Africa. Depending on the time of year, we have up to 35 different nationalities in our schools at any one time!

## **Tell me about your teachers**

We select our teachers very carefully. Most of our teachers have a degree and all of them have an English language teaching qualification. They must also have the kind of personality which enjoys meeting people from all over the world and a desire to make their lessons stimulating and enjoyable.

## **Are all course materials included?**

Textbooks and other course materials are included in the course fees. In fact, every student gets a textbook as well as access to **myBSC**, our eLearning platform and portal to the BSC world! This system has been carefully designed to support all areas of your experience with British Study Centres.

## **End of course certificate**

At the end of the course you will receive a certificate from the school where we will state the duration of the course and level achieved. The certificate is given to all students provided their attendance is at least 85%.

## **What about internet access?**

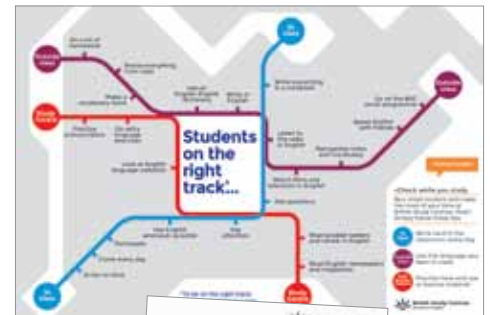
Standard and Wi-Fi internet access is free of charge at all of our schools. Our student houses and residences are all fitted with Wi-Fi internet access which is free, too. Many homestays also offer free internet access.

## **What should I do if I am not happy with some aspect of my stay?**

If you have a problem with your course, accommodation or any other aspect of your stay, please talk to us as soon as possible.

You will find detailed information about the complaints procedure and who to contact in the downloads section of our website:

[www.british-study.com/adults/policies.php](http://www.british-study.com/adults/policies.php)



A selection of classroom and general materials designed exclusively for BSC

## **Can't find the answer you need?**

We know you have lots of questions and we hope we've answered everything you need to ask. However, if the answer to your question isn't here, please email us at:

**e:** [info@british-study.com](mailto:info@british-study.com)



97%

of our students would  
recommend BSC to  
a friend (Jan-Aug 2015)

95

different nationalities  
studied at our schools  
in 2015

## **Learning in English, living in English... thinking in English...**

We provide a rewarding and cosmopolitan learning environment, which gives students the very best chance to achieve their goals.



INTERACTIVE  
PRINT



Download the free  
Layar App



Scan this page



Discover  
interactive content

Watch the video  
and hear what  
Bianca and other  
students have to  
say about Oxford  
and our school.



**British Study Centres**  
School of English

**ADULTS  
JUNIORS  
TEACHER TRAINING  
ONLINE**

**Thinking in English**

[www.british-study.com](http://www.british-study.com)

**British Study Centres Head Office**

2nd Floor, 37 Duke Street,  
London W1U 1LN

**t:** +44 (0)20 7487 9030

**f:** +44 (0)20 7487 9051

**e:** [info@british-study.com](mailto:info@british-study.com)

**British Study Centres London**

Hannah House, 13-16 Manchester Street,  
London W1U 4DJ

**t:** +44 (0)20 7317 0160

**f:** +44 (0)20 7317 0161

**e:** [london@british-study.com](mailto:london@british-study.com)

**British Study Centres Oxford**

Oxenford House, Magdalen Street,  
Oxford OX1 3AE

**t:** +44 (0)1865 246620

**f:** +44 (0)1865 246857

**e:** [oxford@british-study.com](mailto:oxford@british-study.com)

**British Study Centres Brighton**

Fairfax House, 47 Cromwell Road,  
Brighton & Hove,  
East Sussex BN3 3ER

**t:** +44 (0)1273 229740

**f:** +44 (0)1273 208401

**e:** [brighton@british-study.com](mailto:brighton@british-study.com)

Accredited by the  
**BRITISH COUNCIL**  
for the teaching  
of English

**ALTO** Association of  
Language Travel  
Organisations

  
**British Study Centres**  
GROUP

A member of the British Study Centres  
group of colleges

**ENGLISHUK**  
member